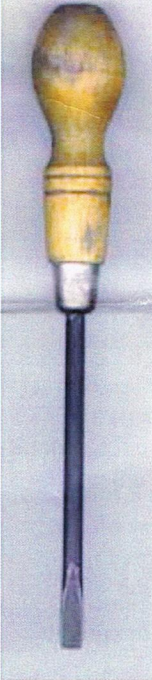


The "official" Sunbeam Tool Kit

With thanks to Mark Olsen (Tiger) US enthusiast and www.tigersunited.com for these photos and descriptions of what your toll roll should look like and what should be in it. Also thanks to Graham Vickery of S.T.O.C. (Sunbeam Tiger Owners Club) in Great Britain for supplying this information, which was published in "Cats Whiskers". Ed.

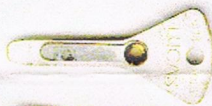


Tool Roll Bag: Four pockets inside



Screwdriver P.79758

No markings. Wood handle. Black oxide

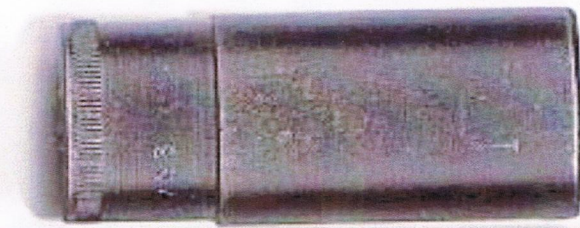


Distributor key - P.41129
(2 1/8")



Grease gun - P.45610
TECALEMIT - ENGLAND

Cast aluminium finish



Box spanner - 9221514 & Tommy bar - P.53782
Black oxide. No markings.



Spanners (Superslim)

The spanners have sizes cast on both sides. "SUPERSLIM" is cast in the center of each spanner on one side and a "MADE IN ENGLAND" symbol on the other. Spanner sizes are (left to right):

"13/16AF 11/16AF", "3/4AF 5/8AF", "9/16AF 1/2AF"; "1/2AF 7/16AF" and if you have a MK II; "15/16AF 7/8AF"



Nave plate extractor - P.102286

This tool has no markings. Alpines has a thin one (7/16") while the Tiger has a thicker one (3/4"). For removal of hub caps. 5" Black oxide



Wheel brace - P.113516
This tool has two uses. To remove the wheel lug nuts and a cranking handle for lifting the jack. Reads 3/4" P.4199 Black paint.

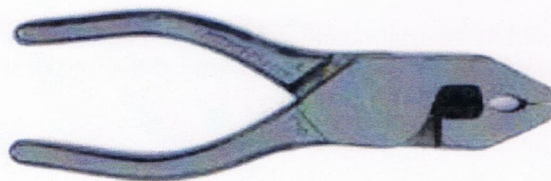


Tyre Valve Extractor. This yellow plastic tool, about 3/16 inches in diameter, is meant to remove/install the valve core from the inner tubes (or currently the valve stem). Since they now replace this entire assembly with every new tubeless tire installation, there probably isn't much call for this tool.



Adjustable Spanner - P.41399

This is the famous King Dick 4" Adjustable Spanner. Detail reads KING DICK on the sliding portion. Black oxide.



Pliers - P.79756 TW Made in England.
Black oxide